

**Create your own path with Brick Elite Parkour Equipment**



PRODUCTS CATALOG







# TABLE OF CONTENTS

<b>Assembled Modules</b>	<b>3</b>
Precision Bar	3
Precision Ledge	3
Low Bone	4
High Bone	4
L	5
Donjon	5
<b>Single Modules</b>	<b>7</b>
Stud	7
Tower	8
High Tower	8
Wall	8
High Wall	9
Very High Wall	9
Top Very High Wall	10
Precision Beam	10
Inclined Wall	10
Trapeze Wall	11
L Wall	11
<b>Accessories</b>	<b>12</b>
Hand Rail	12
Guard Rail	12
<b>Training Kits</b>	<b>15</b>
Kit S	15
Kit M	16
Kit L	16
<b>Tubular Structures</b>	<b>17</b>
Small	17
Medium	18
Large	18
<b>Safety Equipement</b>	<b>19</b>
Landing Mat	19
Junction Key	19
Protections to be fixed on module	19

**“From the beginning Brick took shape from a desire to inspire tracers and transmit the values of Parkour to as many people as possible. We have imagined a range of equipment to allow you to create training areas as big as your ambitions.**

**Tracers, we want to be a source of inspiration for you and help you to remain creative and innovative every day. We offer you Brick modules to help you unleash your full potential. We called on the best tracers to help design and test all of our products to ensure they offer you the best possible experience.”**

**Mathieu Dumet**  
Brand Manager at Brick

## **QUALITY AND CONSCIOUS MANUFACTURING**

Brick offers you modular and movable Parkour equipment that you can adapt to all your situations. Therefore, we manufactured all parts to be as robust as possible and portable anywhere.

Mainly made of recyclable materials, such as wood and metal, we want to offer you the best equipment while respecting our planet.

Our efforts are now focused on localizing the entire manufacturing process in Europe. For the moment, our carpets are sewn in Lille (59), our metal structures are made in Spain, where our wood is also purchased.

## **SAFETY FOR ALL**

The modules are equipped with non-slip pads and weights to guarantee the stability and safety of the structure. At the delivery you will receive an installation manual containing the safety rules to be observed. Be sure to consult them carefully before use. You can see the Safety equipment section if you want to add any equipment to secure your tracers.

## **SIMPLE, MODULAR AND PRACTICAL**

Brick self-supporting modules are suitable for the practice of outdoor and indoor Parkour. Due to the variety of our uniquely designed modules and the clip lock function, you can assemble and create training areas to suit your needs.

Their mobility shortens installation and storage times, while their flexibility allows you to embrace your creativity to create as many combinations as you like.

Be sure, each module is equipped with weights to guarantee stability and safety during sports practice.

## **5 YEAR WARRANTY**

All our products are guaranteed for a period of 5 years from the date of purchase for any construction or manufacturing defect.

If you encounter a defect, please contact our customer support.



Assemble Brick modules to form *your own training area* for the practice of Parkour and Parkour Freestyle. You will find *assembled modules, single modules and accessories* so you can choose the perfect fit.

Modules are *self-supporting* so you have nothing to fear about their stability and robustness. The presence of weights and skids has been entirely studied to *guarantee your tracers' safety*.

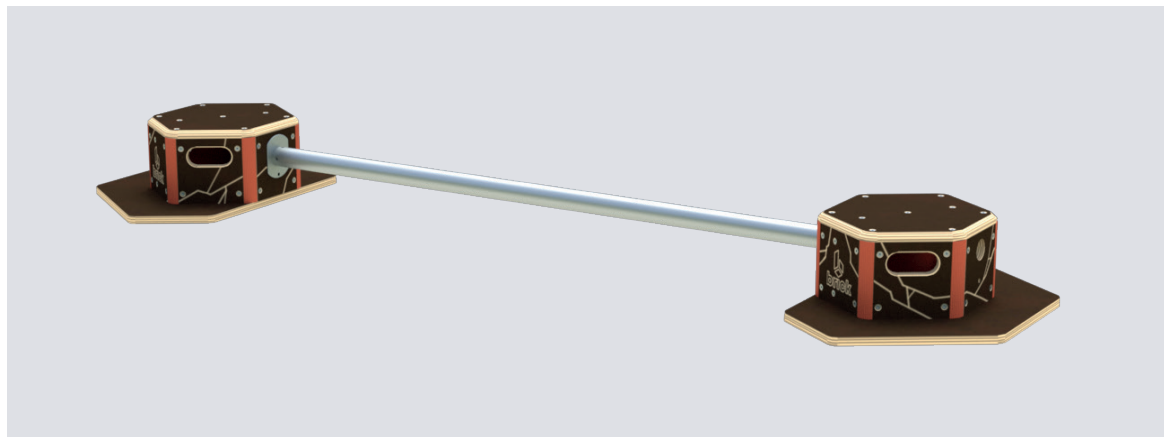
Each module is equipped with a lever allowing the multidirectional wheels to come out and thus making their *movement simple and quick*. This way you spend less time setting up and storing equipment.

*Need advice ?* Our team is available to help you *create the training area suited to your ambitions*.

# ASSEMBLED MODULES

Assembled modules are assembled to form a finished obstacle. They are separable to give you maximum flexibility and creativity. You can thus arrange your training area with assembled modules as offered in the catalog or split them into several modules to create a new configuration.

This type of module can be made up of single modules and accessories that you find hereafter. They have been designed to reproduce urban environments in order to practice Parkour.



## PRECISION BAR

**Dimensions (mm)**  
1890 x 660 x 200

The Precision Bar can be used as a crossing obstacle or to practice the movement of the pendulum.

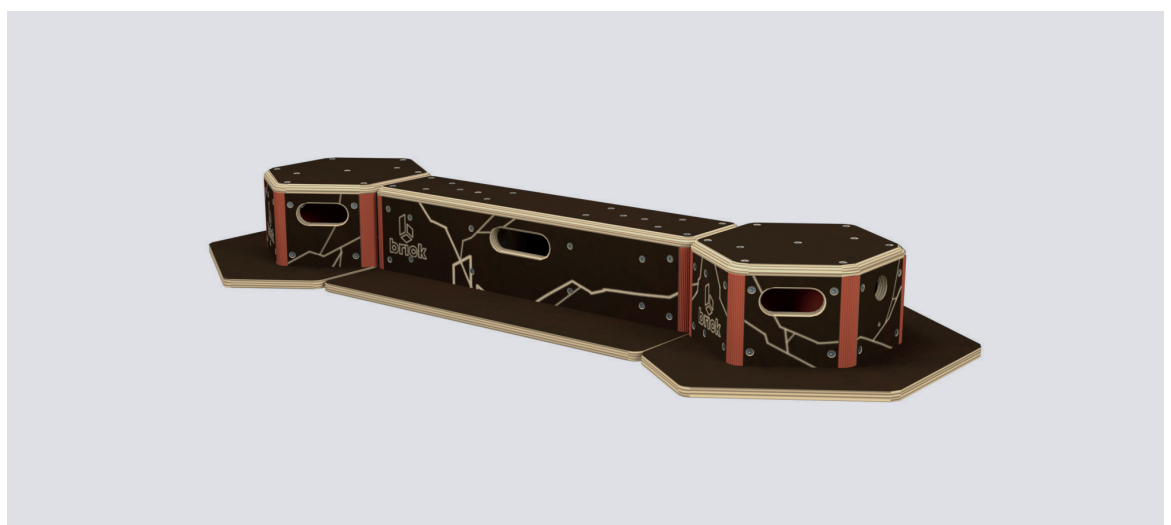
3

2 x Stud  
1 x 1m Handrail

Whatever your choice, this bar is removable at the ends. In this way, you can attach it to two other modules, like inserting it between a Wall and a Tower.

**Ref.**  
00550100

**Weight (Kg)**  
22,5



## PRECISION LEDGE

**Dimensions (mm)**  
1690 x 660 x 200

The precision ledge is intended for practitioners wishing to train their balance.

2 x Stud  
1 x Precision Beam

**Ref.**  
00540100

**Weight (Kg)**  
30

It consists of three elements which are the studs and the beam, once separated it constitutes 3 modules to work the precision jump. The precision ledge can be coupled to one or more bars to create a complete precision path.





## LOW BONE

2 x Tower  
1 x Wall

Ref.  
00510100

**Dimensions (mm)**  
2000 x 640 x 560

**Weight (Kg)**  
97

The Low Bone module is made up of two Towers and a Wall. It also easily adapts to your sports set-ups. With a relatively low height, the basic exercises are easier to learn. Split into three parts, the Low Bone can be assembled differently to form a new obstacle.

If you want a higher module, discover the High Bone.



## HIGH BONE

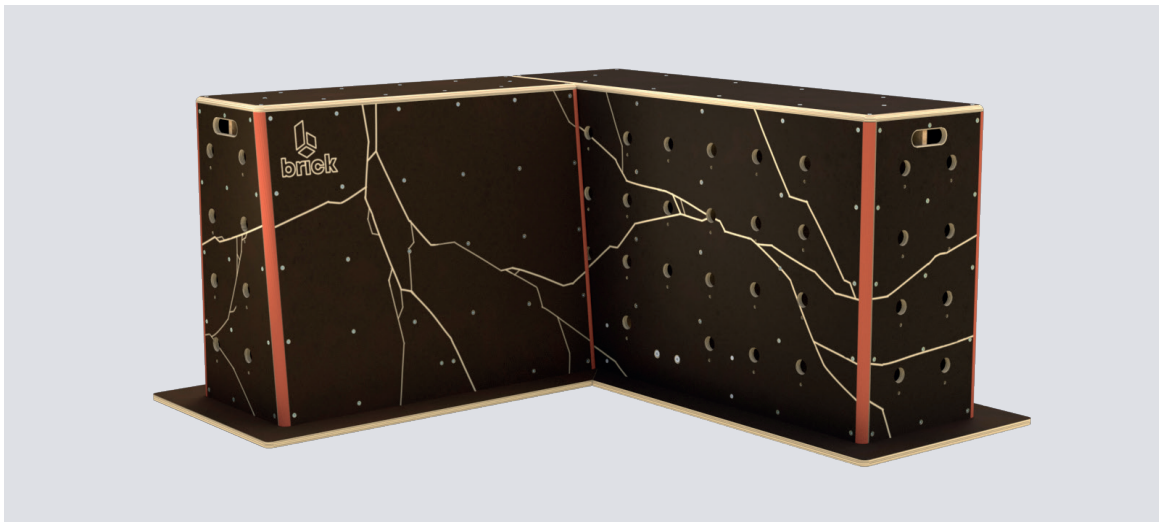
2 x High Tower  
1 x High Wall

Ref.  
00520100

**Dimensions (mm)**  
2000 x 640 x 956

**Weight (Kg)**  
126

The High Bone module, simple and quick to install, easily integrates into the configuration of your Parkour training areas. It is suitable for overcoming obstacles with a stylized design allowing new possibilities for the discipline. Separable into three parts, the High Bone can be arranged differently and allow the creation of a new obstacle.



1 x L Wall  
1 x Trapeze Wall

**L**

**Dimensions (mm)**  
1476 x 1940 x 956

Similar to urban landscapes, the L Module consists of two walls forming a right angle. It incorporates into your training areas giving more possibilities for tricks and Parkour techniques. One of the walls is slightly sloped.

**Ref.**  
00530100

**Weight (Kg)**  
180

5



1 x Donjon  
1 x Guard Rail

**DONJON**

**Dimensions (mm)**  
1420 x 1420 x 2000

The Donjon module is a station that can be used as a platform to facilitate the momentum for moving from one element to another. There are ridges at the corners that can incorporate bars in different directions and also allow for a ticking motion.

**Ref.**  
00060101

**Weight (Kg)**  
346



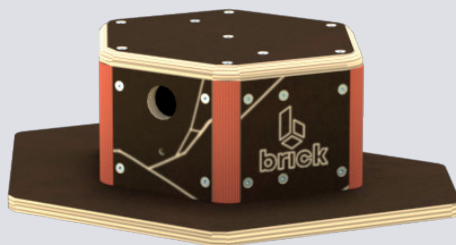


# UNIT MODULES

Add single modules to your training areas to create more obstacles. They are autonomous but can also be combined with other modules and accessories.

Most of our single modules are present in our assembled modules to form a complete obstacle. For example, the Low Bone module is made up of two Towers and one Wall, which you can order individually or as a composite module. In any case, your assembled module can be divided so that you arrange your training zone differently.

7



## STUD

Ref.  
00160100

**Dimensions (mm)**  
445 x 660 x 200

**Weight (Kg)**  
8

The Stud is a module that can be used as a support for the Precision Bar. You can buy just one and place the Handrail between the Stud and another module, or order them in two.





**TOWER**

The Tower module is a small module that can be used in particular as a junction between other modules. Add a Precision Bar between the Tower and Wall modules, and you will get a new configuration for your training setups.

**HIGH TOWER**

The High Tower, higher than the Tower, is a module that can be used in particular as a junction between the other modules. Add a Precision Bar between the High Tower and High Wall modules, and you will get a new configuration for your workouts.

**Dimensions (mm)** 650 x 950 x 560  
**Weight (Kg)** 27  
**Ref.** 00010100

**Dimensions (mm)** 650 x 950 x 956  
**Weight (Kg)** 35  
**Ref.** 00040100



**WALL**

**Dimensions (mm)** 1300 x 612 x 560

The Wall corresponds to a low crossing obstacle, which is one of the components of the Low Bone module. Acquired separately, it allows you to compose a training area with more possibilities by connecting it to other modules.

**Ref.** 00020100

**Weight (Kg)** 43



## VERY HIGH WALL

**Dimensions (mm)**  
612 x 1700 x 2000

**Ref.**  
00070100

**Weight (Kg)**  
244

The Very High Wall module is flexible and easily extended to customize the obstacle in order to aim for an ever higher sporting challenge. The bars arranged on the ground make it self-supporting and create a stable support for the athletes.

9



## HIGH WALL

**Dimensions (mm)**  
1300 x 612 x 956

**Ref.**  
00030100

**Weight (Kg)**  
55.7

Similar to the Wall, the High Wall is a slightly higher crossing obstacle, which is one of the components of the High Bone module. Acquired separately, it allows you to compose a training area with more possibilities by connecting it to other modules.



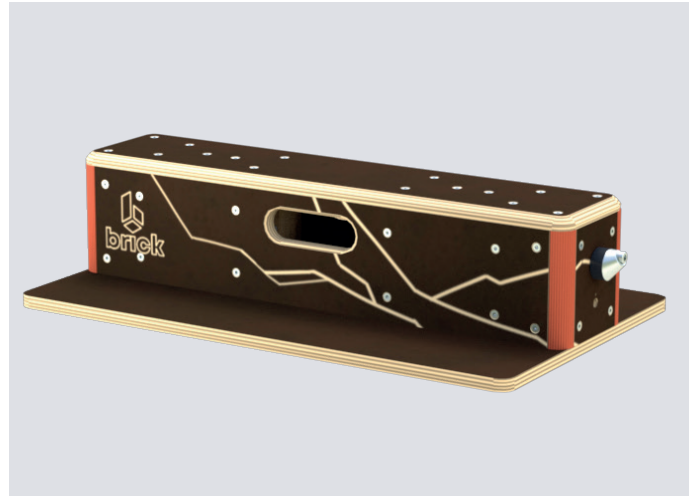
### TOP VERY HIGH WALL

The Top Very High Wall is a module that allows you to increase the height of your other modules. Place it over the Very High Wall to increase its height.

**Dimensions (mm)**  
612 x 1700 x 556

**Weight (Kg)**  
72

**Ref.**  
00100100



### PRECISION BEAM

The Precision Beam teaches you how to lock your landings when crossing. Its narrow surface is reminiscent of the thin walls and other obstacles found in an urban landscape. The beam can clip to the other modules to form a link between them.

**Dimensions (mm)**  
800 x 175 x 200

**Weight (Kg)**  
14

**Ref.**  
00110100



### INCLINED WALL

**Dimensions (mm)**  
890 x 1300 x 2000

The Inclined Wall is assembled to form a slope that can be crossed vertically or horizontally. The combination with other modules is done by a system of clips or the addition of an accessory. For example, if you associate the Inclined Wall with the Donjon module, it will then serve as a support to take a leap and allow you to climb the height of the Donjon module.

**Ref.**  
00050100

**Weight (Kg)**  
219





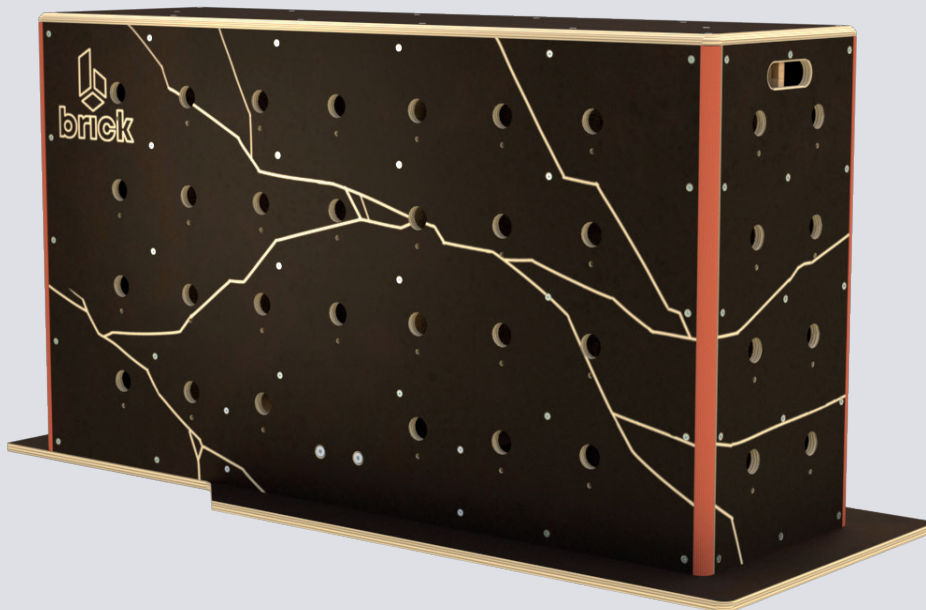
## TRAPEZE WALL

Ref.  
00090100

Dimensions (mm)  
738 x 1320 x 956

Weight (Kg)  
88

The Trapeze is a slightly sloped obstacle which usually makes up the L module. It can be incorporated as you wish into your training areas. The inclination can be an asset for sequences of tricks.



## L WALL

Ref.  
00080100

Dimensions (mm)  
738 x 1940 x 956

Weight (Kg)  
92

The L Wall is a non-linear obstacle that usually makes up the L module. Its difference in depth allows it to be combined with several other modules and accessories.

# ACCESSORIES

Brick brand accessories are available to complete your training areas. They come in addition to create ever more challenges for your tracers.

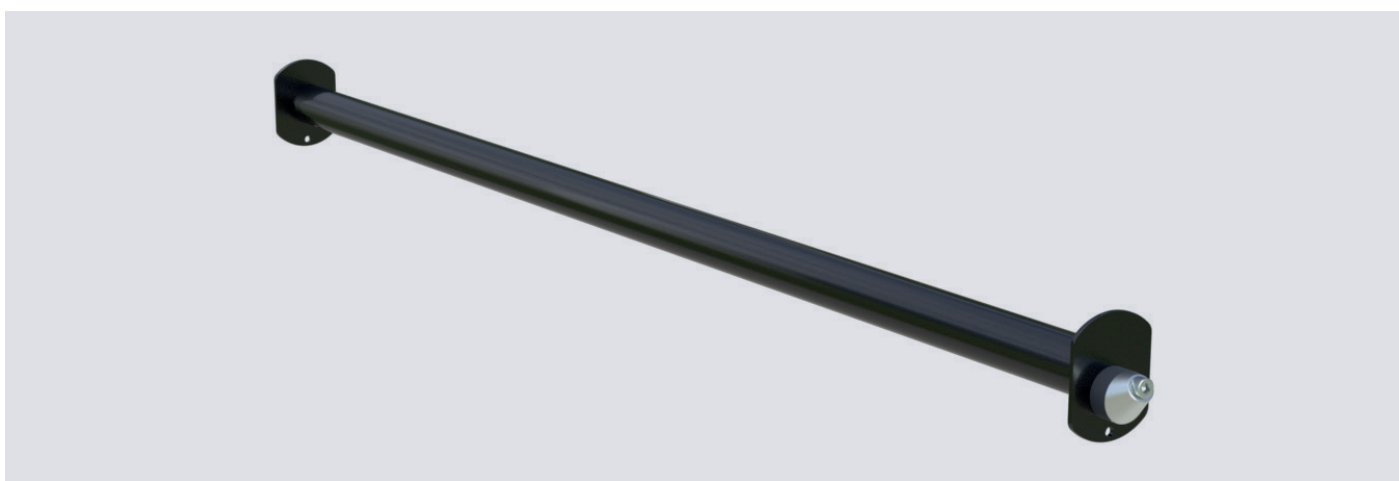
All the accessories are clipped to the modules using our Junction Key. You can therefore imagine more and more different combinations for your Parkour and Parkour Freestyle training sessions. Some of our accessories are already present in our compound modules.



## GUARD RAIL

The Guard Rail can be adapted to several modules to be both a railing for safety on the high modules but also an element where it is possible to perform several figures or swings. This element is very playful since it allows practitioners of all levels to be able to let their imagination run wild and perform acrobatics with their feet as well as with their hands.

Dimensions (mm)	Weight (Kg)	Ref.
Ø x 1280x2100	48	00150100



## HAND RAIL

### Dimensions (mm)

1000  
1500  
2000

### Ref.

1m — 00140101  
1,5m — 00140102  
2m — 00140103

### Weight (Kg)

1m — 6,5  
1,5m — 9  
2m — 12

These connecting bars make it possible to link the modules together but also to be used as precision bars on jumps between modules.

They exist in several sizes and can be coupled between wooden modules.







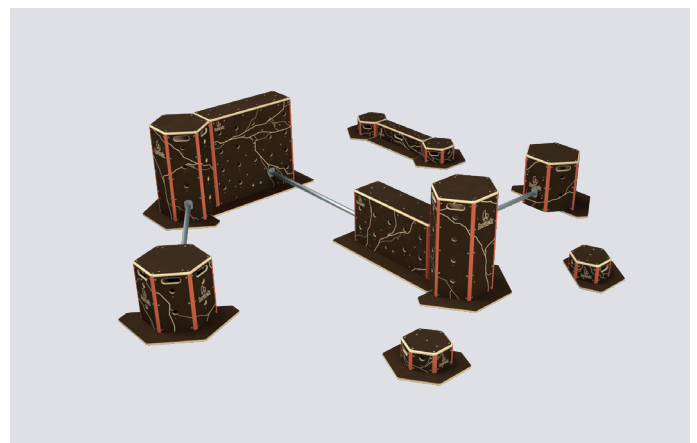
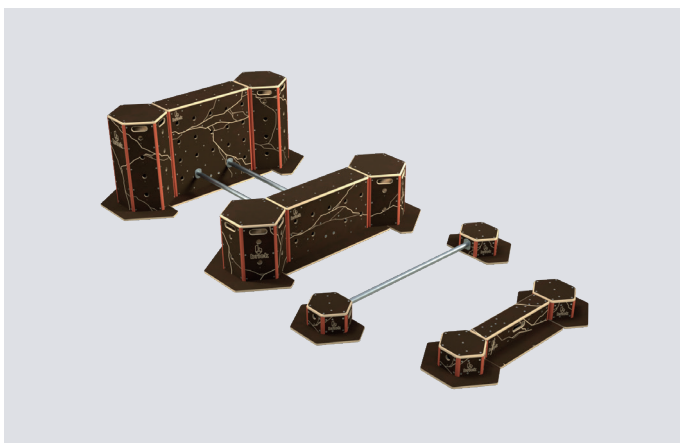
  
**brick**

# TRAINING KITS

Our kits are available to save time in choosing modules. They are ready to install and use once assembled with instructions. They remain secure and suitable for the practice of Parkour indoors and outdoors.

Each kit is supplied with instructions provided for a typical configuration. However, you can choose a different setting with the help of our videos available online. Designed from size S to L, you choose the kit adapted to the practice you want. The level of difficulty increases gradually with height (meaning the M structure is simpler than the L structure).

15



## S KIT

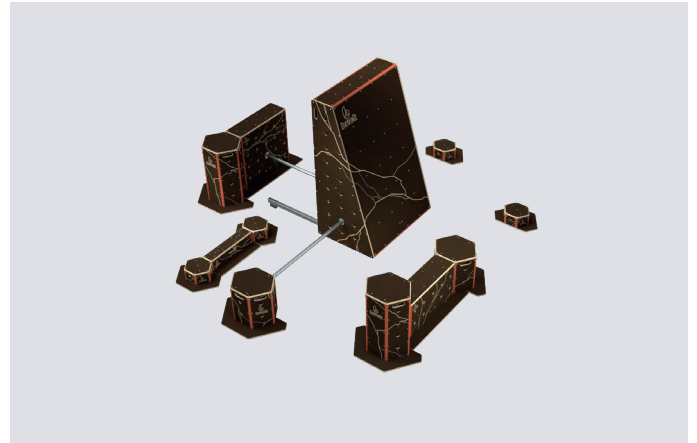
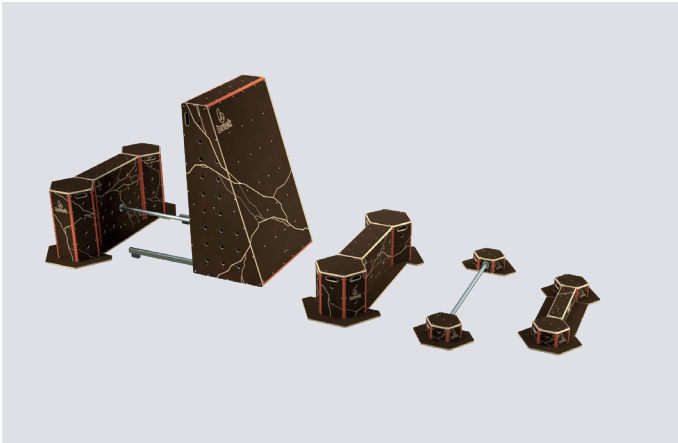
1 x Low Bone  
1 x Precision Bar  
1 x High Bone  
1 x Precision Ledge  
2 x Hand Rail

The S kit consists of a Low Bone, a High Bone, a Precision Ledge, a Precision Bar and two connecting bars (2m handrails). It is particularly suitable for the practice of beginners, the youngest and uninitiated audiences. The components of this kit allow you to practice basic technical movements of Parkour and Parkour Freestyle.

### Example of configuration of the S Kit (right hand image)

Ref.  
00600100

This configuration allows you to perfect your crossing techniques but also your balance thanks to the connecting bars and the precision beams.



**M KIT**

- 1 x Inclined Wall
- 1 x Low Bone
- 1 x High Bone
- 1 x Precision Ledge
- 1 x Precision Bar
- 2 x Hand Rail

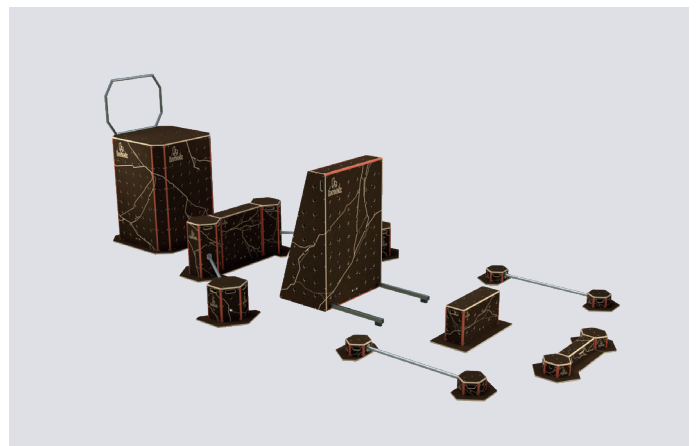
The M kit consists of an Inclined Wall, a Low Bone, a High Bone, a Precision Ledge, a Precision Bar and a connection bar (2m handrail). The M Kit is suitable for practice of tracers already initiated and wishing to improve.

**Example of configuration of the M Kit** (*right hand image*)

In this form, the M kit offers additional options in terms of evolution for the tracer. The level of performance possibilities also increases with the Inclined Wall module. This configuration allows more connections and jumps between the different modules.

**Ref.**

00600101



**L KIT**

- 1 x Inclined Wall
- 1 x Donjon
- 1 x Low Bone
- 2 x Precision Bar
- 1 x High Bone
- 1 x Precision Ledge
- 2 x Hand Rail

The L kit consists of a Tower, an Inclined Wall, a Low Bone, a High Bone, a Precision Ledge, two Precision Bars and two connection bars (2m handrails). These modules present a higher level of difficulty and are intended for athletes who are moving towards an experienced, even competitive practice.

**Example of configuration of the L Kit** (*right hand image*)

In this lengthwise setting, it offers space and a multitude of movements and crossings, allowing for example timed races. This kit also offers a fairly wide range of modules of different sizes and shapes for high level Parkour Freestyle training.

**Ref.**

00600102



# TUBULAR STRUCTURES

The tubular structures are made for the balance exercises to be performed with the bars. They are ready to use and do not require any additional accessories.

Self-supporting and stable, these structures have been particularly designed to reproduce urban environments - such as scaffolding for example - while ensuring maximum safety. Our support bars have a reinforced density which increases the stability of the various tubular structures.

This apparatus is now used in Parkour competitions. It is the reason why we created it. Our structures are equipped with mats to ensure the safety of athletes.

17



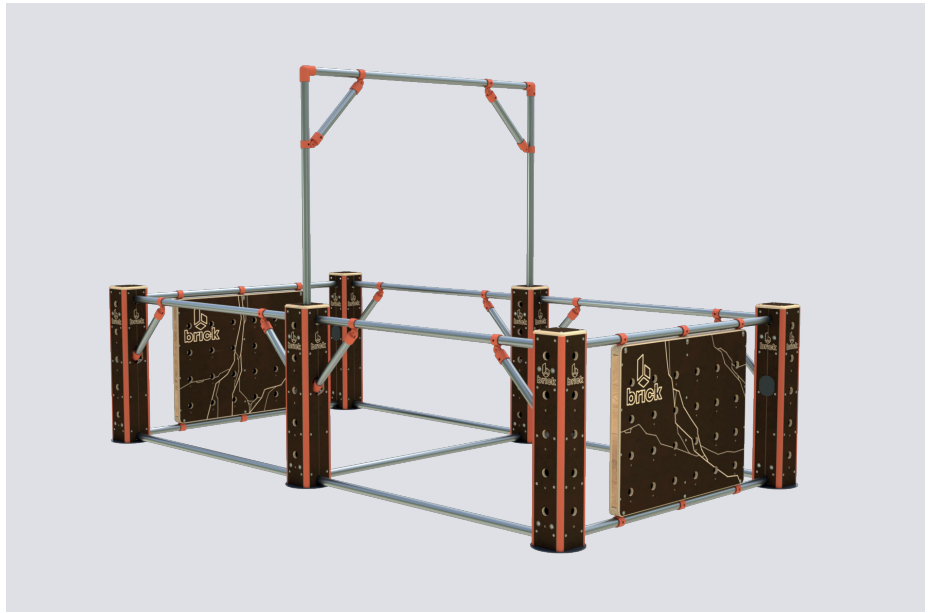
## SMALL

1 x Pipe Structure  
4 x Wood Pillars<sup>90° & 180°</sup>  
1 x Wood Facade

**Dimensions (mm)**  
2000 x 2530 x 2350

**Ref.**  
00170100

The Small square-shaped Tubular Structure is most suitable for beginners and small spaces. It is made up of four Wood Pillars and a Wood Facade, and allows back and forth movements between the two elements.



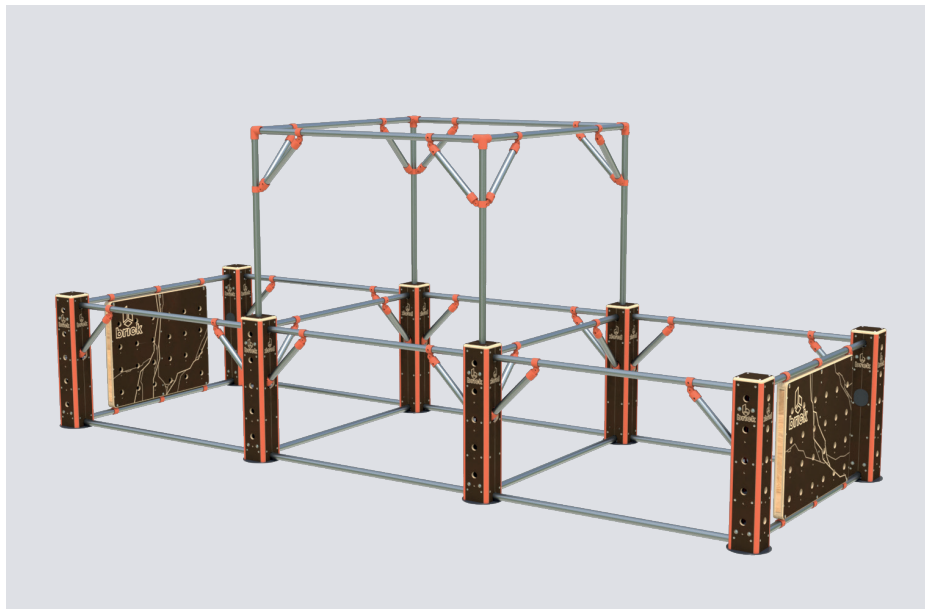
## MEDIUM

1 x Pipe Structure  
6 x Wood Pillars<sup>90° & 180°</sup>  
2 x Wood Facade

**Dimensions (mm)**  
2000 x 4000 x 2350

**Ref.**  
00170101

The Medium Tubular Structure offers greater possibilities thanks to the presence of six Wood Pillars and two Wood Facades. The back and forth movements are therefore more complete.



## LARGE

1 x Pipe Structure  
8 x Wood Pillars<sup>90° & 180°</sup>  
2 x Wood Facade

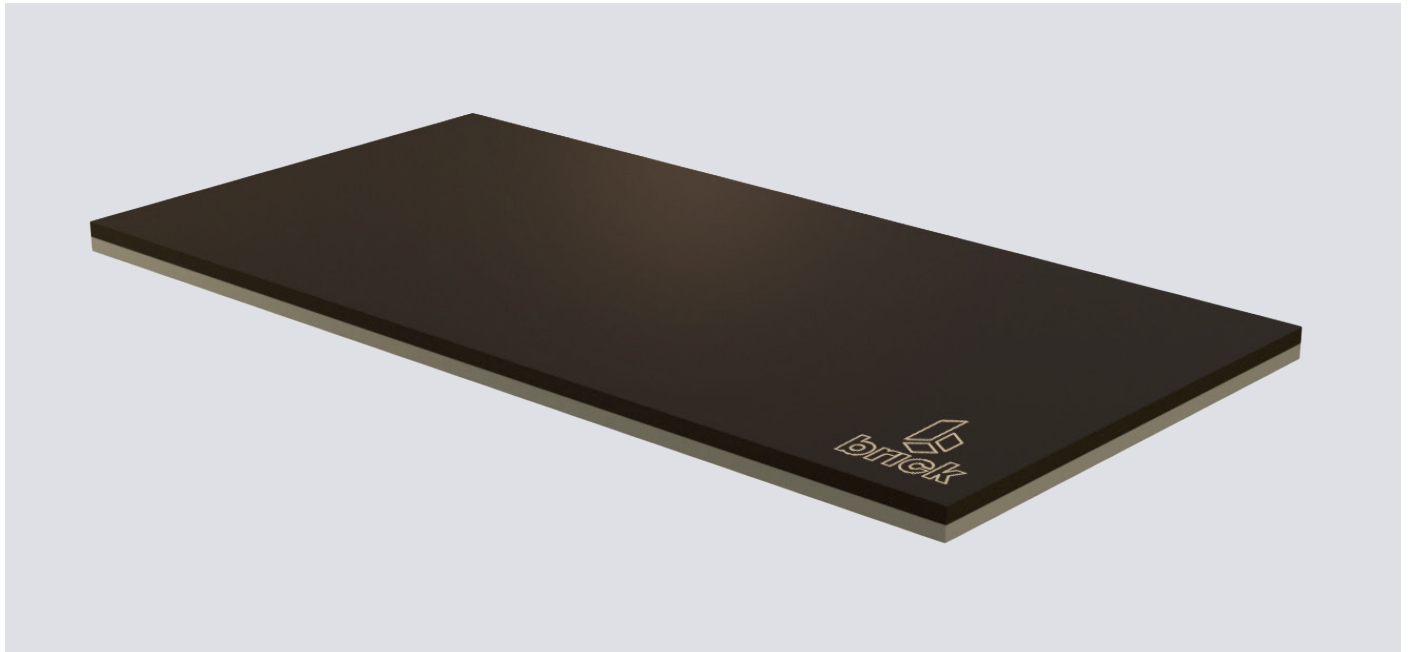
**Dimensions (mm)**  
2000 x 6400 x 2350

**Ref.**  
00170102

The Large Tubular Structure is the most advanced structure with the presence of eight Wood Pillars and two Wood Facades. Suitable for large spaces and advanced competition, this structure offers you training possibilities that will help you progress quickly. It is totally adaptable to outdoor practice.

# SAFETY EQUIPMENT

We want our equipment to provide maximum safety and stability when practicing Parkour. This is why they also respect the standards in force and the recommendations of the Parkour Federation.



19

## LANDING MAT

Our mats allow for optimal landing conditions. They have been designed to fit perfectly with Brick equipment and help offer you effective protection.

## JUNCTION KEY

Our Junction Keys (patent application pending) have been specially designed to ensure the stability and security of the modules between them. Their conical shape allows them to be inserted easily and to be guided to fit together. A sliding and locking system then ensures stability when assembling modules. They can be mounted on most of our equipment and provide optimal support. When storing, the Junction Keys are easily removed thanks to a reverse sliding movement.

## PROTECTIONS TO BE FIXED ON MODULE

Our protections can be fixed on our modules. Made from foam, they secure Brick equipment in case of a wrong move resulting in a fall. For example, the foam can be attached to the Precision Bar and therefore prevents a shock between the module and the athlete's body during a movement.





  
**brick**





PRODUCTS 20  
CATALOG 22

Scan this QR Code  
to access our  
**WEBSITE**  
[brickparkour.com](http://brickparkour.com)



A BRAND DISTRIBUTED BY

**GYMNOVA**

CS 30056 - 45 RUE GASTON DE FLOTTE  
13375 MARSEILLE CEDEX 12 - FRANCE

TEL. +33 (0)4 91 87 51 20

[export@gymnova.com](mailto:export@gymnova.com)  
[WWW.GYMNOVA.COM](http://WWW.GYMNOVA.COM)

an **ABEO** company